

# DECEMBER 2009 HITS LIST

*DUE IN STORES 12/1*



*DUE IN STORES 12/8*

*DUE IN STORES 12/1*



*DUE IN STORES 12/8*

*DUE IN STORES 12/8*



*DUE IN STORES 12/15*

*DUE IN STORES 12/8*



*DUE IN STORES 12/15*



*DUE IN STORES 12/15*



*DUE IN STORES 12/15*



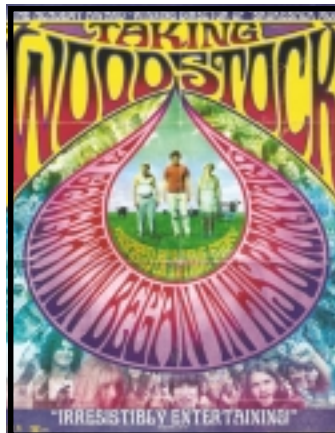
*DUE IN STORES 12/22*



*DUE IN STORES 12/22*



*DUE IN STORES 12/29*



*DUE IN STORES 12/29*



*DUE IN STORES 12/29*



*DUE IN STORES 12/29*

